

GreenStar™ 3 2630 Display

Important Notes:

Installation time will vary depending on the amount of existing data and the software version currently on the display. On average, total install time is 10-15 minutes.

It is recommended to back up display data, prior to updating any Software as a precaution, to protect your information.

It is suggested to erase all data from your GreenStar™ 3 2630 Display before loading new Setup Data, in an effort to remove unnecessary and potentially corrupt files that may hinder display performance.

To ensure complete and proper functionality, the most current version of GreenStar™ Display software and Apex™, or preferred partner, desktop software should be used.

Compatibility:

- For John Deere Machine Sync functionality, GreenStar™ 3 (GS3) 2630 Displays must operate with matching software versions. (18-1 recommended).
- For John Deere Machine Sync – coverage map sharing, shared coverage maps will not persist after updating displays from SU15-2 to any newer version. Perform software update at the conclusion of field operations to ensure no coverage maps are lost.
- Coverage maps will not persist if GS3 2630 Display software is backdated from 18-1 to SU15-2 or older software version.
- ISOBUS AEF Certification functionality is only approved for 30 Series and newer tractors.
- ISOBUS AEF Certification functionality will disable the use of the virtual Original GreenStar™ Monitor mode within the GS3 2630 Display and controllers that are designed for use with the Original GreenStar™ Monitor mode.
- Generation 4 CommandCenter™ setup profiles will not directly import into the GS3 2630 Display. In order to import Gen4 CommandCenter™ profiles, first export data from the GS3 2630 Display with the profile name "JD4600". Next, using the same USB, export all data from the Gen4 CommandCenter™. All data will be merged into the JD4600 profile and then can be imported into the GS3 2630 Display.
- Software Version (18-1) is backwards compatible on all previous GreenStar™ 3 2630 Display hardware revisions. GS3 2630 Display software (15-2 and earlier) is not compatible with new GS3 2630 Display hardware revision H and later. GS3 2630 Display software (16-1 and earlier) is not compatible with new GS3 2630 Display hardware revision J and later. Hardware revision letter is found in the 7th digit of the display's serial number.
- Software version 18-1 is backward compatible with AYM controller software older than v83.11.
- All data created with 18-1 software will not be backwards compatible. Data created with software versions 17-1 and older will need to be cleared off display and a new setup file will need to be imported.
 - For full Coverage Map Sharing (CMS) and Guidance Line Sharing (GLS) functionality with MTG, GreenStar™ 3 (GS3) 2630 Displays must operate on 18-1 software.

New Features:

Wireless Data Transfer - New Diagnostic Addresses and Diagnostic Trouble Codes available to troubleshoot WDT issues.

Status Errors- New Diagnostic Addresses and Diagnostic Trouble Codes available to track frequency and reduce Display Errors for an improved user experience.

StarFire™ 6000 Receiver

New Features:

Over The Air Reprogramming – StarFire™ 6000 now supports over the air (OTA) reprogramming. The StarFire™ 6000 must be on software version 3.70M or newer to allow OTA via MTG.

Region 4 (US & Canada Only) and Region 2 Only – John Deere Mobile RTK Signal icon has been updated



USB Drive Softkey – The icon for the USB Drive has been updated to show the File Manager Icon. It will also now be named “File Manager”



Satellite Information Softkey – The icon for the satellite information softkey has been updated.



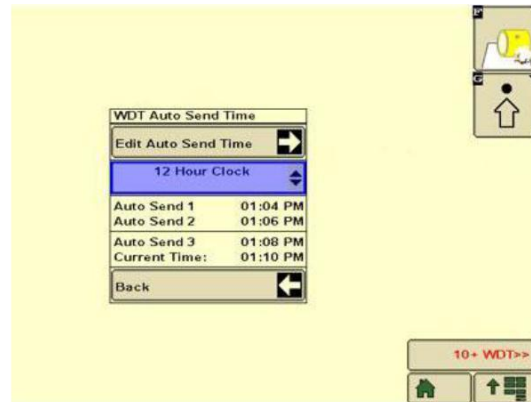
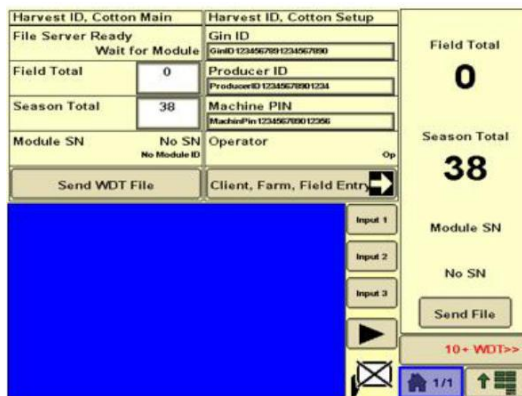
Capture Data Button – Layout on the Capture Data screen has been updated. Export Data, Import Data and Update Receiver will become highlighted once the USB has been inserted into the onboard StarFire™ 6000 USB Port.



Application Controller 1120

New Features:

Harvest ID, Cotton Files – In addition to current WDT functionality, you now have the option to send HIDC files at selectable times of day as well as manually on demand in a more simplified manner without Client, Farm, Field change. To have this functionality, you will need to have Application Controller 1120 software 1.51V or newer.



GreenStar™ Rate Controller Dry*

Important Notes:

GDC 2.11A is the last software version available through GS3 Live Update.

GDC 2.20A has been available since spring 2015 and contains diagnostic language updates. This software can only be obtained through Service ADVISOR™.

AutoTrac™ Vision Guidance

Important Notes:

AutoTrac™ and RowSense™ activations are required.

Compatibility:

AutoTrac™ Vision Guidance Camera 18-1 software 3.02D is only compatible with RowGuidance 3 Controller software AKK15783E and GS3 2630 17-1 software 3.34.1345 or newer and Generation 4 18-1 software 10.10.404-345.

Release Notice

These are software release notes for GreenStar™ 3 2630 and related products. Release Notes can be found on www.stellarsupport.com. Note: Your use of the software is governed by the End User License Agreement included with the software.

Copyright © 1996-2018 Deere & Company

Software Versions – Bold items have changed from previous releases and are included in the software bundle. Please utilize the John Deere Custom Performance™ website to view and/or update controllers not included with this software bundle.

<u>Version #</u>	<u>Description</u>
3.36.1073	GreenStar™ 2630 Display
2.8.1033	GreenStar™ 2600 Display
2.15.1096	GreenStar™ 1800 Display
GSD 1.97 B	Original GreenStar™ Display
GR6 3.80 G	StarFire™ 6000 Receiver
ITC 2.32 H	StarFire™ 3000 Receiver
ITC 3.73 H	StarFire™ iTC Receiver
LCR 1.10 C	StarFire™ 300 Receiver
SF 7.70 B	StarFire™ Gen II Receiver
03B10	John Deere Mobile RTK Modem – R2 only
1.10A	Machine Communication Radio
TCM 1.09 A	TCM
2.71 T	Application Controller 1100 (iGrade™, John Deere Active Implement Guidance)
1.51 V	Application Controller 1120 (John Deere Mobile Weather, John Deere Harvest Identification, Cotton)
ATU 1.13 A	AutoTrac™ Universal (ATU) 100
ATU 2.30 A	AutoTrac™ Universal (ATU) 200
RG2 2.04 B	AutoTrac™ RowSense™ – Universal
CAT 1.11 B	AutoTrac™ Controller (Deere)
GRC 3.50 A	GreenStar™ Rate Controller
GDC 2.11 A*	GreenStar™ Rate Controller Dry
VGC 3.02 D	AutoTrac™ Vision Guidance Camera
HMCT 1.20 A	Harvest Monitor™ Cotton SCM
CMFS 2.07C	Cotton Mass Flow Sensor CMFS
SMON 1.73 A	Original Harvest Monitor™ SPFH
HMON 1.20 C	Harvest Monitor™ Combine with In-Tank Moisture
MST 7.01 B	Harvest Monitor™ Elevator Mount Moisture Board
AC2 .11	Original Air Cart
SMVR 1.01M	SeedStar™ Gen II